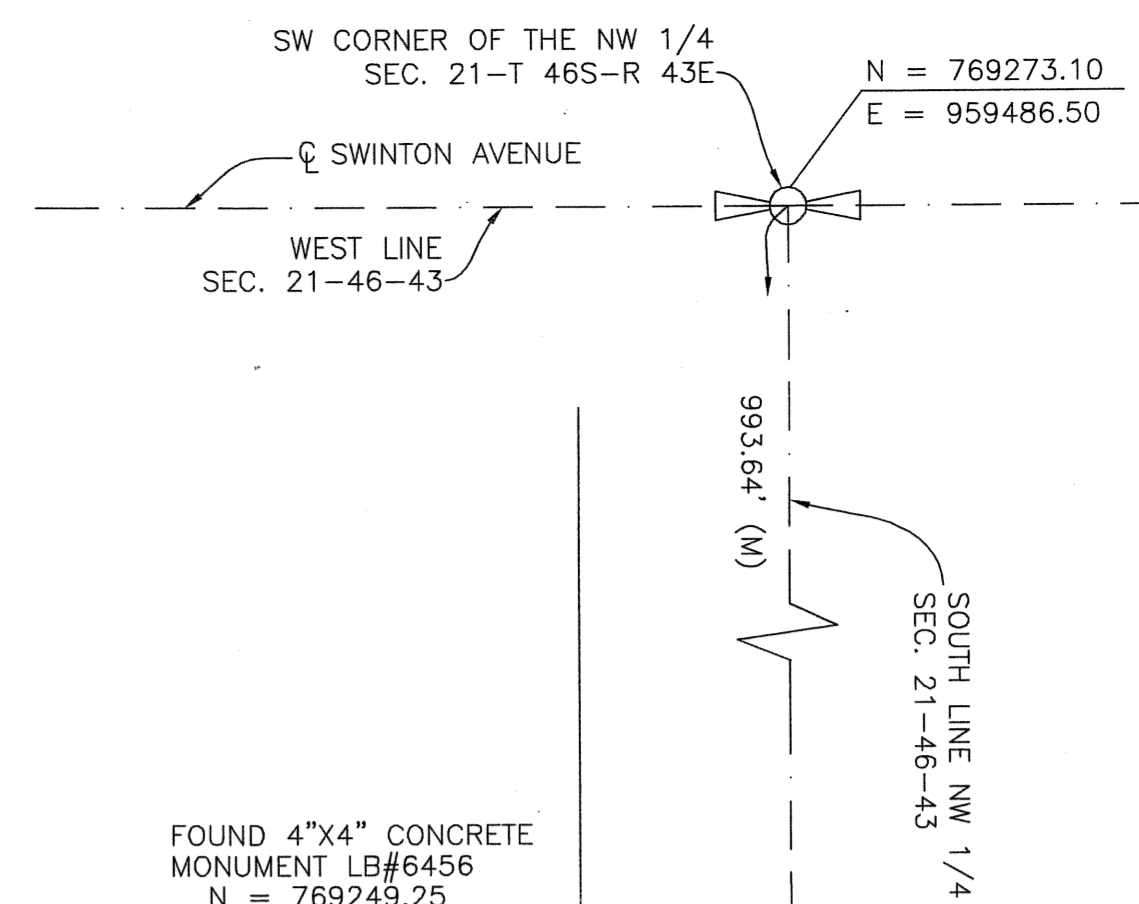
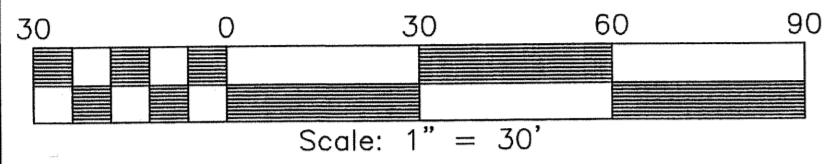
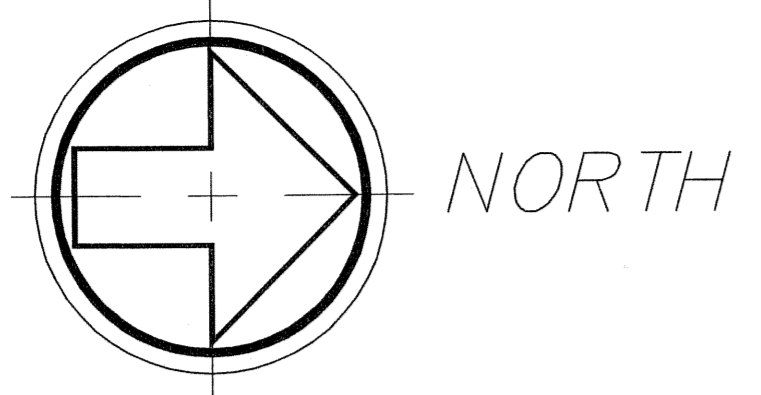


# HERITAGE CLUB REPLAT

A REPLAT OF A PORTION OF HERITAGE CLUB (PB 100, PGS 152 AND 153, PBCR)  
IN SECTION 21, TOWNSHIP 46 SOUTH, RANGE 43 EAST,  
CITY OF DELRAY BEACH, PALM BEACH COUNTY, FLORIDA

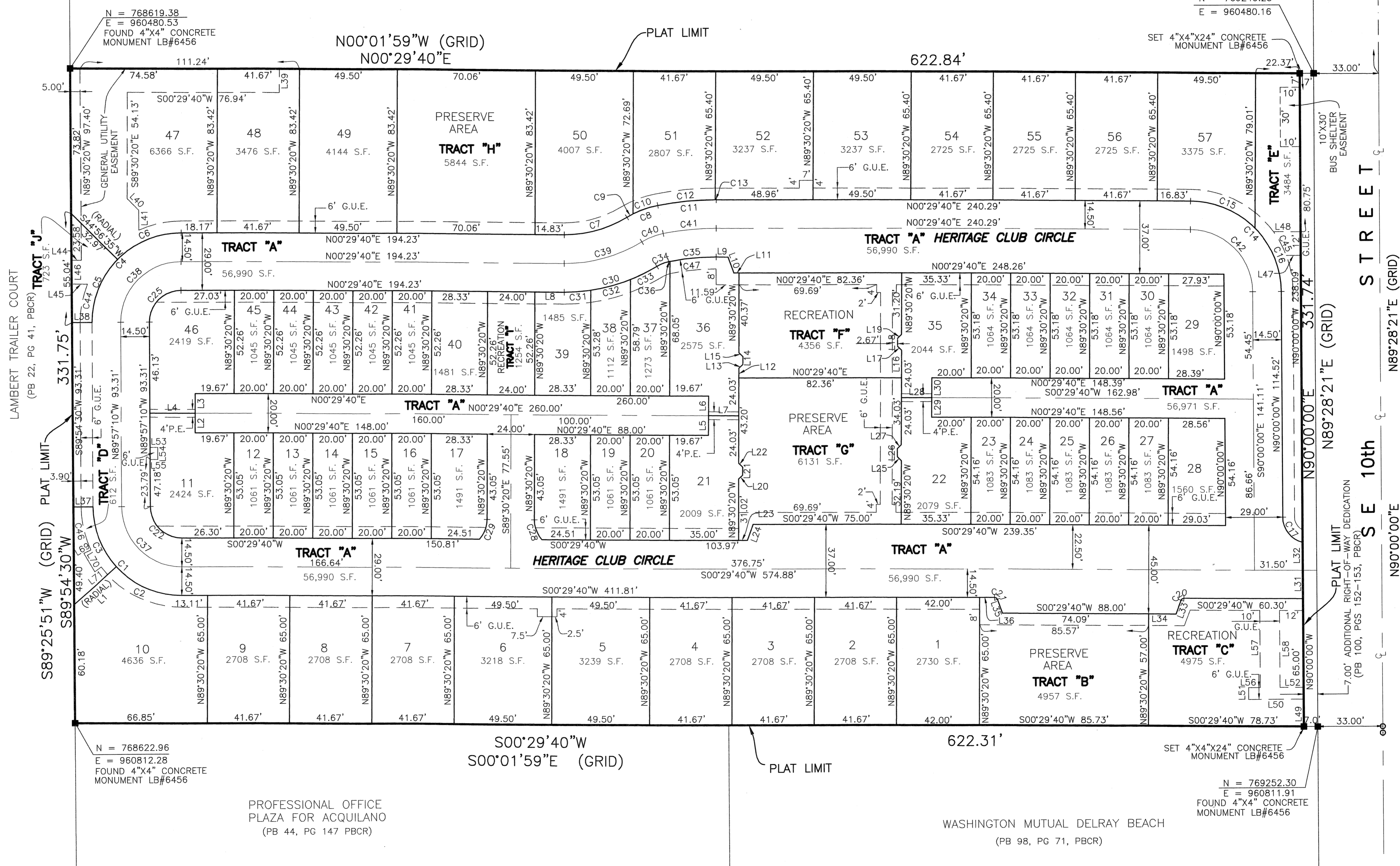


STATE OF FLORIDA SS  
COUNTY OF PALM BEACH  
This Plat was filed for record at \_\_\_\_\_ M., this \_\_\_\_\_ day of \_\_\_\_\_, 200\_\_\_\_ and duly recorded in Plat Book No. \_\_\_\_\_ on Pages \_\_\_\_\_ and \_\_\_\_\_.  
SHARON R. BOCK,  
CLERK AND COMPTROLLER  
BY: \_\_\_\_\_ DC

LINE TABLE

NUMBER	DIRECTION	DISTANCE
L1	N42°01'00"W	28.74'
L2	N89°30'20"W	10.00'
L3	N89°30'20"W	10.00'
L4	S00°29'40"W	23.00'
L5	N89°30'20"W	10.00'
L6	N89°30'20"W	10.00'
L7	N00°29'40"E	15.33'
L8	N00°29'40"E	14.87'
L9	N00°29'40"E	8.51'
L10	N00°29'40"E	2.83'
L11	N89°30'20"W	4.86'
L12	N44°30'20"W	2.83'
L13	N89°30'20"W	3.94'
L14	N89°30'20"W	2.83'
L15	S45°29'40"W	2.83'
L16	N89°30'20"W	14.03'
L17	S45°29'40"W	2.83'
L18	N89°30'20"W	3.94'
L19	N44°30'20"W	2.83'
L20	N44°30'20"W	2.83'
L21	N89°30'20"W	3.94'
L22	S45°29'40"W	2.83'
L23	S00°29'40"W	4.46'
L24	N89°30'20"W	8.51'
L25	S45°29'40"W	2.83'
L26	N89°30'20"W	3.94'
L27	N44°30'20"W	2.83'
L28	N00°29'40"E	15.33'
L29	N89°30'20"W	10.00'
L30	N89°30'20"W	10.00'
L31	N90°00'00"W	14.50'
L32	N90°00'00"W	14.15'
L33	S69°30'20"E	7.46'
L34	S00°29'40"W	13.91'
L35	S70°29'40"W	7.46'
L36	N00°29'40"E	7.68'
L37	S00°02'50"W	9.86'
L38	S00°02'50"W	10.09'
L39	S89°30'20"E	12.00'
L40	N45°29'40"E	8.35'
L41	S89°57'10"E	10.08'
L44	N00°30'00"E	4.00'
L45	S00°29'40"W	7.96'
L46	S89°54'30"W	12.02'
L47	S00°29'59"W	7.30'
L48	N00°29'59"E	13.73'
L49	N90°00'00"W	14.09'
L50	S00°00'00"W	27.82'
L51	N90°00'00"W	6.00'
L52	N00°00'00"E	27.82'
L53	N00°02'50"E	4.00'
L54	S89°57'10"E	6.00'
L55	S00°02'50"W	12.00'
L56	N00°00'00"E	5.82'
L57	N90°00'00"W	39.11'
L58	N90°00'00"W	39.02'
L68	S25°08'41"E	4.00'
L69	(RADIAL)	
L70	N59°13'44"E	10.78'
L71	N36°23'50"W	4.00'
L71	(RADIAL)	

DELRAY PLACE CONDOMINIUM  
PHASE 1 AND 2  
(PB 23, PG 174, PBCR)



CURVE TABLE

NUMBER	DELTA ANGLE	RADIUS	ARC LENGTH
C1	89°33'10"	45.00'	70.33'
C2	47°29'20"	45.00'	37.30'
C3	42°03'50"	45.00'	33.04'
C4	90°26'50"	45.00'	71.04'
C5	44°54'35"	45.00'	35.27'
C6	45°32'15"	45.00'	35.77'
C7	31°44'50"	60.00'	33.25'
C8	20°33'34"	47.00'	16.87'
C9	04°20'25"	47.00'	3.56'
C10	16°13'08"	47.00'	13.30'
C11	11°11'16"	153.00'	29.88'
C12	10°59'16"	153.00'	29.34'
C13	00°12'01"	153.00'	0.53'
C14	89°30'20"	46.00'	71.86'
C15	45°15'04"	46.00'	36.33'
C16	44°15'16"	46.00'	35.53'
C17	76°39'25"	13.00'	17.39'
C20	70°00'00"	1.50'	1.83'
C21	70°00'00"	1.50'	1.83'
C22	89°33'10"	16.00'	25.01'
C25	90°26'50"	16.00'	25.26'
C28	41°48'37"	15.00'	10.95'
C29	41°48'37"	15.00'	10.95'
C30	31°44'50"	89.00'	49.31'
C31	08°42'01"	89.00'	13.51'
C32	13°23'06"	89.00'	20.79'
C33	09°39'43"	89.00'	15.01'
C34	20°33'34"	18.00'	6.46'
C35	11°11'16"	124.00'	24.21'
C36	00°18'29"	124.00'	0.67'
C37	89°33'10"	30.50'	47.67'
C38	90°26'50"	30.50'	48.15'
C39	31°44'50"	74.50'	41.28'
C40	20°33'34"	32.50'	11.66'
C41	11°11'16"	138.50'	27.04'
C42	89°30'20"	31.50'	49.21'
C44	22°19'13"	51.00'	19.87'
C45	15°06'01"	52.00'	13.70'
C46	25°11'31"	51.00'	22.42'
C47	10°52'47"	124.00'	23.54'

AREA TABLE

TRACT "A"	56,990 S.F.	TRACT "H"	5,844 S.F.
TRACT "B"	4,957 S.F.	TRACT "I"	1,254 S.F.
TRACT "C"	4,975 S.F.	TRACT "J"	723 S.F.
TRACT "D"	612 S.F.	TRACT LOTS	117,202 S.F.
TRACT "E"	3,484 S.F.		
TRACT "F"	4,356 S.F.		
TRACT "G"	6,131 S.F.	TOTAL AREA	206,528 S.F.

THIS INSTRUMENT PREPARED BY:  
MICHAEL D. ROSE, P.S.M.

**SDA SHAH DROTOS & ASSOCIATES** ENGINEERING SURVEYING PLANNING  
CERTIFICATE OF AUTHORIZATION NO. LB6456  
3410 N. Andrews Avenue Ext • Pompano Beach, FL 33064  
PH: 954-943-9433 • FAX: 954-783-4754

DECEMBER 2004